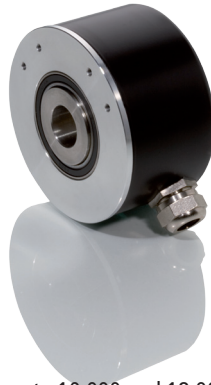


## Type AMI 503



### Pulses

Each pulse possible  
Interpolation

up to 10.000 and 18.000  
internal 2 ... 50 times interpolation optional

### Mechanical Data

Hollow shaft  
Shaft load  
Rotating speed  
Working temperature  
Vibration  
Shock  
Ingress protection  
2014/30/EU EMV-rules

Ø 12 ... 28 mm, stainless steel  
axial 10 N, radial 20 N  
max. 6.000 rpm  
0° C ... +80° C  
10 g (20 ... 2.000 Hz)  
100 g (11 ms)  
IP 64 on shaft  
DIN EN 61000-6-2, DIN EN 61000-6-3

### Electrical Data

Signals  
Light source  
Operating voltage  
Current consumption  
Output frequency

square wave and sinusoidal  
LED  
5 Volt  $\pm$  5 %, 10 ... 30 Volt, 5 ... 30 Volt  
max. 100 mA without load  
300 kHz with square wave 5 Volt  
300 kHz with square wave 10 ... 30 Volt  
1 MHz with interpolation

Output level

5 Volt Line-Driver  
10 ... 30 Volt push-pull short-circuit proof

Current output

20 mA

Output signals

2 channels A and B phase-shifted 90° electrically  
zero-pulse 1 pulse per revolution  
length 90°, 180° or 360° electrically  
all signals with inversion

